



**boschman**  
advanced packaging technology

## **REELSTAR SERIES**

Reel-to-Reel Molding technology



# ABOUT BOSCHMAN

## Boschman is the one stop shop for highly innovative packaging solutions.

Boschman is a high-tech, solution driven Dutch company focusing on advanced packaging solutions. We provide a unique one-stop-shop concept – from idea to industrialization – offering her customers one point of contact for all packaging business. This approach ensures all processes to be carefully monitored and integrated, in order to create the most efficient and effective packaging solution and as short as possible time-to-market.

## Our industry focus

Our satisfied customers can be found in the following industries:

- Automotive
- Medical
- Avionics
- Mobile
- Industrial & Renewables

## Our application areas



**MemS & Sensors**



**2.5D/3D Packages**



**High Power Modules and packages**



**Smart Cards**



**Optical Packages**



## OUR PRODUCTS

### About Reel-to-Reel Molding technology

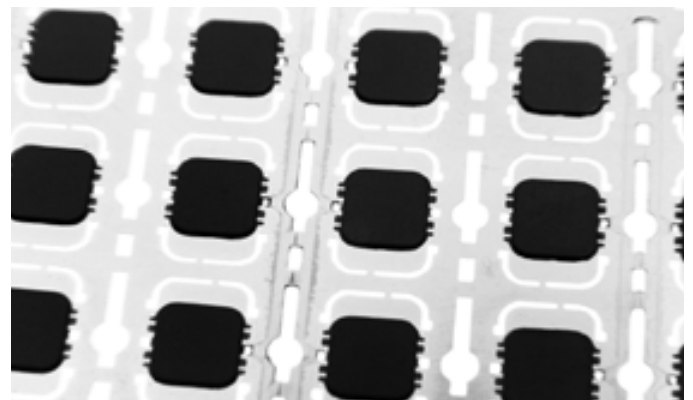
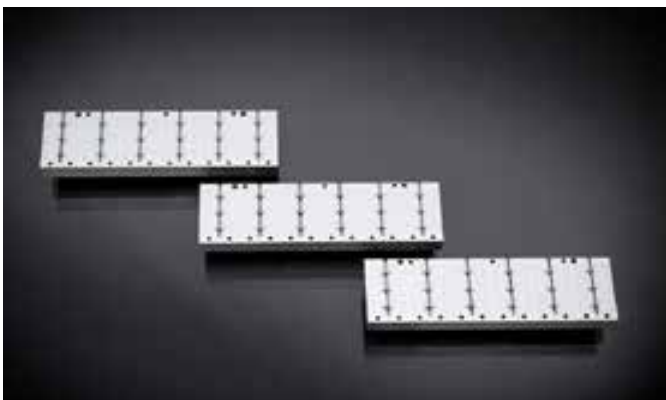
Reel-To-Reel (R2R) system UPH is largely determined by effective mold length and machine time. The Reelstar platform offers a mold length of 350mm and very short machine time to achieve maximum productivity. For ultra-high volumes, we offer our dual Reelstar system. Two reels are molded at the same time doubling the output. The system dimensions are identical to the single reel system.

Our dual reel system has individual reel transport systems, transfer units and degate units for each reel. The reels are not connected meaning that molding can be done with both reels or only the front or only the rear reel. This feature provides maximum flexibility.



### Reelstar Auto-1-NF-S (single reel)

Automatic single reel-to-reel multiplunger molding system designed for contactless smartcard modules, discrete small signal packages and ultra-thin tape-based packages. The Reelstar offers high throughput, competitive pricing, low compound waste and high-precision mold tooling. Stand-alone or integrated into a line with front-end and back-end equipment.



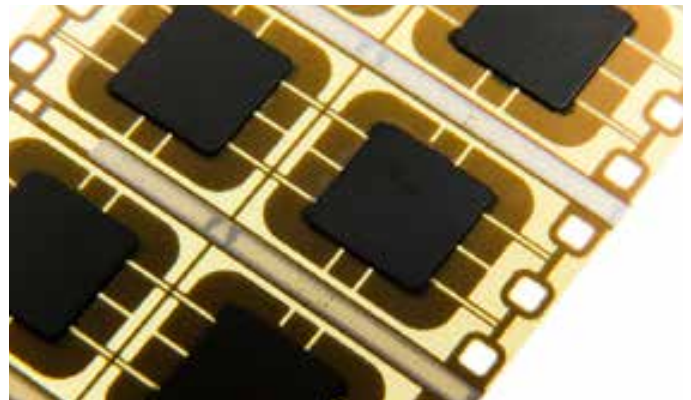
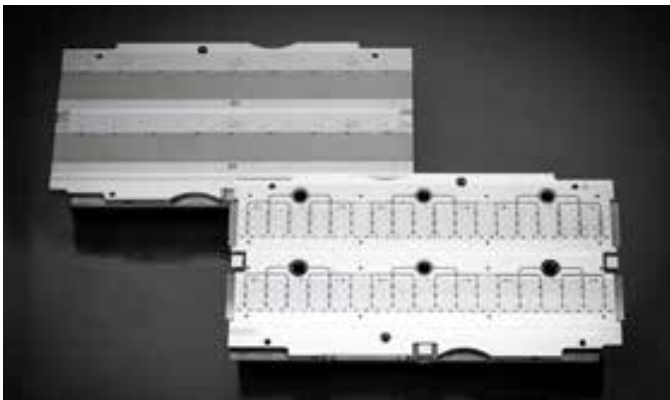


## OUR PRODUCTS



### Reelstar Auto-2-NF-S (dual reel)

Automatic dual reel-to-reel multiplunger molding system designed for contactless smartcard modules, discrete small signal packages and ultra-thin tape-based packages. The Reelstar offers unrivaled high throughput, competitive pricing, low compound waste and high-precision mold tooling. The two reels are controlled independently, as are the transfer, reel-handling and pellet-handling units. Ability to run with only the front reel or only the rear reel.



### Main Features Reelstar Auto-NF-S:

- Maximum reel width dual reel system 35 mm
- Maximum reel width single reel system 75 mm
- High precision mold
- Ultra-thin endless strip handling
- Separate de-gate station
- High precision press with self-correcting clamping system
- Advanced transfer and cure process closed loop control
- Easy and fast conversion between different packages
- Three mold cleaning methods
- Equipped with internal hard disk and USB port
- I/O menu for easy monitoring
- Energy efficient system design
- CE certified
- Ergonomic design
- Stand alone and inline configuration available

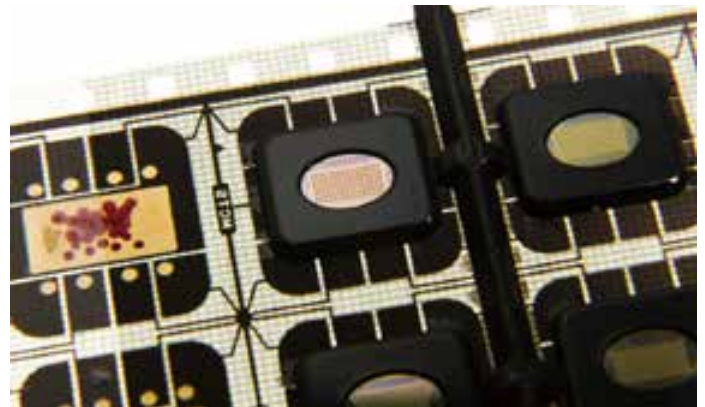


## OUR PRODUCTS



### Reelstar Auto-1-FF-S

Automatic single reel-to-reel multiplunger molding system equipped with film assisted molding and dynamic insert technologies to mold exposed packages in reel-to-reel format. The system and mold can have film in top and bottom mold or film only in top mold. Clean exposed areas are guaranteed by the individual dynamic inserts, which are pressure controlled. The pressure is easy programmable by parameter setting and no mechanical adjustments are needed.



### Main features Reelstar Auto-1-FF-S

- Maximum reel width single reel system 35 mm
- Double film Film Assisted Molding
- Single film (top mold) Film Assisted Molding
- Dynamic Insert Control unit
- Developed for exposed die molding
- Ultra-thin endless strip handling
- Separate de-gate station
- Advanced transfer and cure process closed loop control
- Equipped with internal hard disk and USB port
- I/O menu for easy monitoring
- High precision mold
- CE certified
- Ergonomic design
- Stand alone and inline configuration available

“ SMALLER, BETTER AND LOWER  
COST, WE REALIZE THE BEST  
PACKAGE FOR YOUR PRODUCT ”



package  
development



assembly  
services



equipment

**Boschman** | Advanced packaging technology

Stenograaf 3 6921 EX Duiven T +31 26 319 4900 E info@boschman.nl

[www.boschman.nl](http://www.boschman.nl)